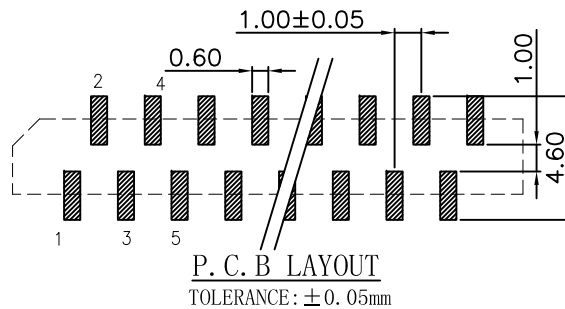
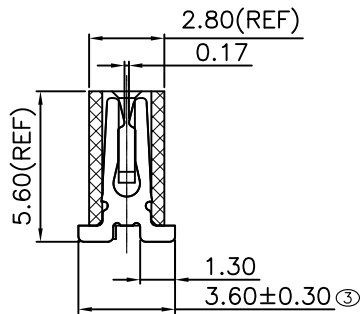
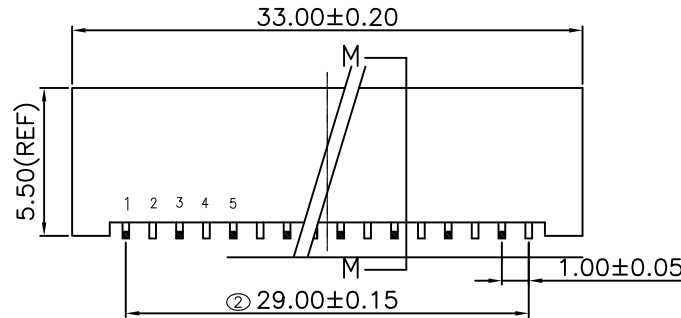
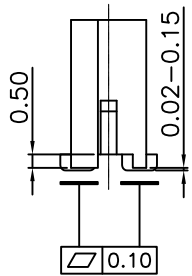
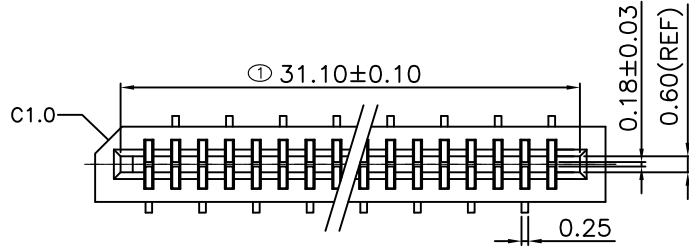


GP Component

REV.	ECN NO.	LOCATIONS	DESCRIPTION	DATE	DESIGN
A0			Initial	2012/12/18	Jamie Zie



注:

材质 (MATERIALS):

- △ 塑胶 (Housing) : PA6T+30% GlassFiber (UL94V-0) 黑色 (Black)
- 端子 (Contacts) : 磷铜 (Phosphor Bronze)
- 电镀 (Plating) : 镍底镀锡 (Tin over Nickel Plated)

性能 (SPECIFICATIONS):

- 额定电压 (Voltage Rating) : 100V AC/DC Max.
- 额定电流 (Current Rating) : 0.5A Max.
- 接触阻抗 (Contact Resistance) : 30 mΩ MAX.
- 绝缘阻抗 (Insulation Resistance) : 500 MΩ MIN.
- 耐电压值 (Withstanding Voltage) : 500V AC RMS
- 温度范围 (Temperature Range) : -40°C TO +85°C

MATRIX PART NO:

M F C - 1 0 - 3 0 T 0 2 R S

Matrix FPC


pitch
25:2.54mm
12:1.25mm
10:1.0mm
05:0.5mm
03:0.3mm

Pin number

RS : ROHS
HF : Halogen Free

Series Number

T: 雙觸式
C: 掀蓋式
P: 壓桿式

NO	VARIETY	QTY	MATERIAL	REMARK
 Matrix Electronics Co., Ltd				
TOLERANCE: X.X ±0.38 X.X ±0.30 X.XX ±0.25 X.XXX ±0.15 ANGLE: ±3°		DESIGN BY : Jamie Zie	DATE : 2012/12/18	PART NAME: FPC1.0 Dual touch Vertical SMT forward
UNIT: mm [inch]		CHECKED BY: Vilen Lee	DATE : 2012/12/18	PART NO. MFC-10-30T02RS
SCALE: 1:1 SIZE: A4		APPROVED BY1: Richard Hsieh	DATE : 2012/12/18	MOLD NO. NA
		APPROVED BY2: Richard Hsieh	DATE : 2012/12/18	DRAW NO. SHEET NO. 1 OF 1