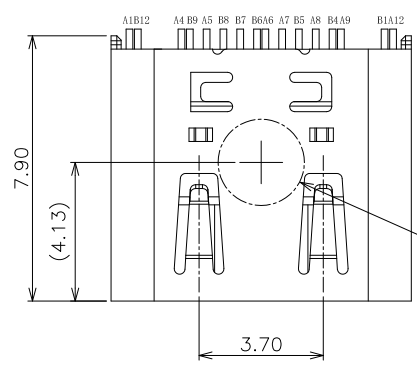
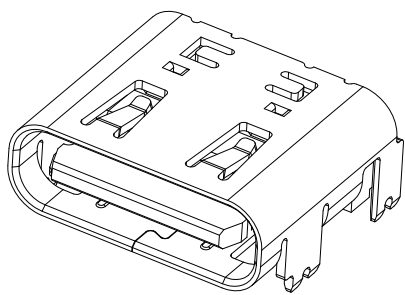


GP Component

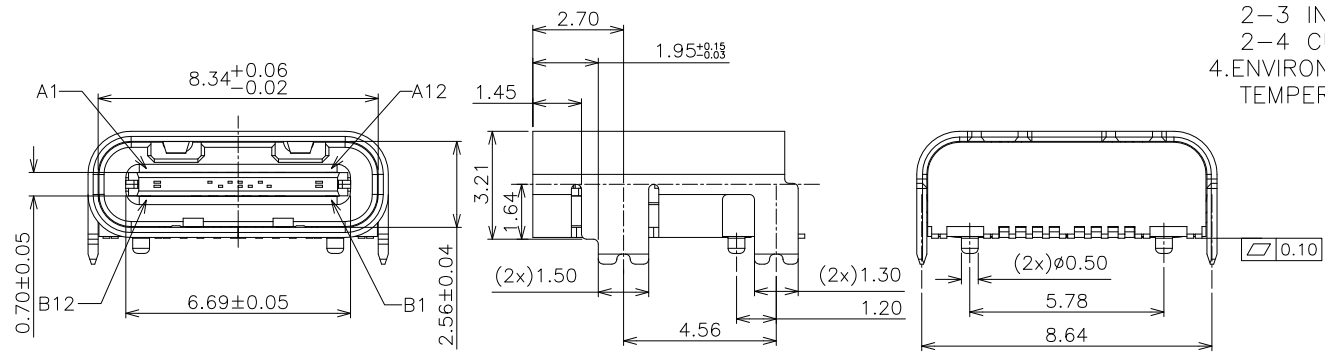
REV.	ECN NO.	LOCATIONS	DESCRIPTION	DATE	DESIGN
A0			Initial	2017/07/28	Phebe Su



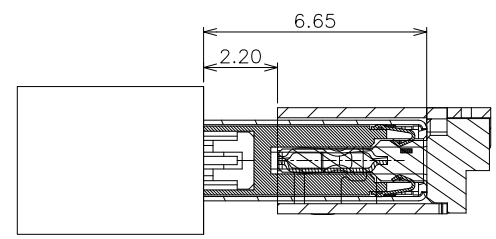
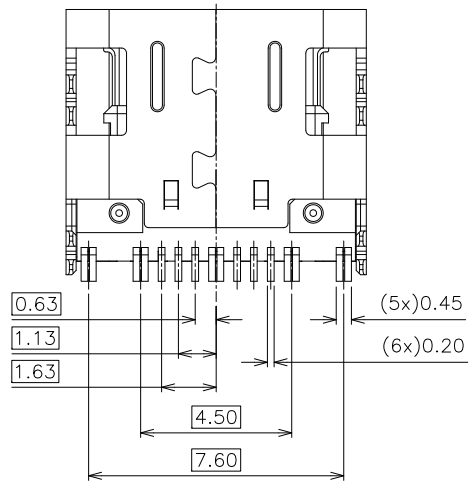
ø2.5mm MAX.
SUCK UP AREA



- NOTES:
- MATERIAL:
 - 1-1 HOUSING: HIGH TEMPERATURE THERMAL PLASTIC; UL94V-0; COLOR: NATURAL
 - 1-2 CONTACT: COPPY ALLOY GOLD FLASH ON CONTACT AREA MATTE TIN 80u" MIN. PLATING ON SOLDER TAILS AREA 50u" MIN. NICKEL UNDERPLATING OVER ALL.
 - 1-3 SHIELD: Stainless steel 50u" MIN NICKEL PLATING OVER ALL.
 - MECHANICAL:
 - 3-1 MATING FORCE: 5-20N
 - 3-2 UNMATING FORCE: 6-20N
 - 3-3 DURABILITY: 5000 CYCLES
 - ELECTICAL:
 - 2-1 CONTACT RESISTANCE : 40mΩ MAX..
 - 2-2 DIELECTRIC WITHSTANDING VOLTAGE: 100V AC R.M.S.
 - 2-3 INSULATION RESISTANCE: 100MΩ MIN.
 - 2-4 CURRENT RATING: 5A
 - ENVIRONMENTAL
 - TEMPERATURE RANGE -40°C ~ +85°C



MATRIX PART NO:
MUSB12-01-244
 MATRIX USB [] [] [] Series number
 Pin Number [] [] []
 Plating
 01:Gold Flash
 15:15u"
 30:30u"

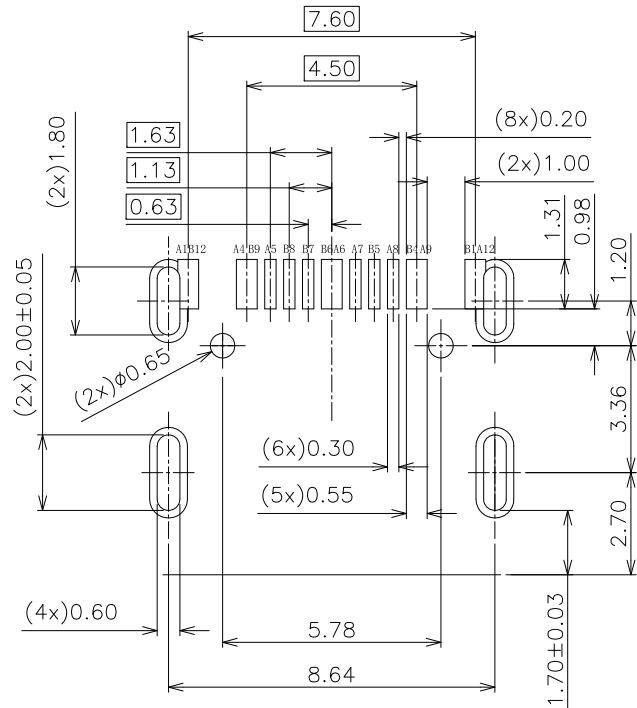


MATING VIEW

Matrix Electronics Co.,Ltd			
TOLERANCE: X.X ±0.30 X.XX ±0.250 X.XXX ±0.15 ANGLE: ±3°	DESIGN BY : Phebe Su	DATE : 2017/07/28	PART NAME: USB 2.0 Type C Female R/A, CL 1.64
	CHECKED BY: Vicky Hsieh	DATE : 2017/07/28	PART NO. MUSB12-01-244
	APPROVED BY1: Richard Hsieh	DATE : 2017/07/28	MOLD NO. NA
UNIT: mm [inch]	APPROVED BY2: Richard Hsieh	DATE : 2017/07/28	DRAW NO.
SCALE:1:1 SIZE:A4			SHEET NO. 1 OF 2

GP Component

REV.	ECN NO.	LOCATIONS	DESCRIPTION	DATE	DESIGN
A0			Initial	2017/07/28	Phebe Su



USB TYPE-C FULL-FEATURED RECEPTACLE INTERFACE PIN ASSIGNMENTS

PIN	Signal Name	Description	PIN	Signal Name	Description
A1	GND	Ground return	B12	GND	Ground return
A4	V _{BUS}	Bus Power	B9	V _{BUS}	Bus Power
A5	CC1	Configuration Channel	B8	SBU2	Sideband Use(SBU)
A6	Dp1	Positive half of the USB 2.0 differential pair-Position 1	B7	Dn2	Negative half of the USB 2.0 differential pair-Position 2
A7	Dn1	Negative half of the USB 2.0 differential pair-Position 1	B6	Dp2	Positive half of the USB 2.0 differential pair-Position 2
A8	SBU1	Sideband Use(SBU)	B5	CC2	Configuration Channel
A9	V _{BUS}	Bus Power	B4	V _{BUS}	Bus Power
A12	GND	Ground return	B1	GND	Ground return

RECOMMEND PCB LAYOUT(TOLERANCE:±0.05)

(THICKNESS:0.8mm) SCALE1:1



Matrix Electronics Co.,Ltd

TOLERANCE: X.X ±0.30 X.XX ±0.250 X.XXX ±0.15 ANGLE: ±3°	DESIGN BY :	DATE :	PART NAME:	
	Phebe Su	2017/07/28	USB 2.0 Type C Female R/A, CL 1.64	
 UNIT: mm [inch]	CHECKED BY:	DATE :	PART NO.	MUSB12-01-244
	Vicky Hsieh	2017/07/28	MOLD NO.	NA
SCALE:1:1 SIZE:A4	APPROVED BY1:	DATE :	SHEET NO.	
	Richard Hsieh	2017/07/28	2 OF 2	
	APPROVED BY2:	DATE :	DRAW NO.	
	Richard Hsieh	2017/07/28		