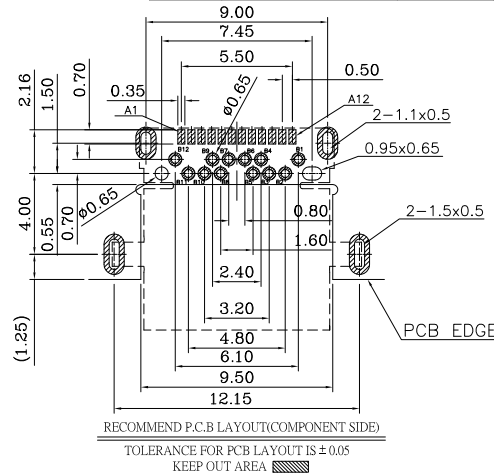
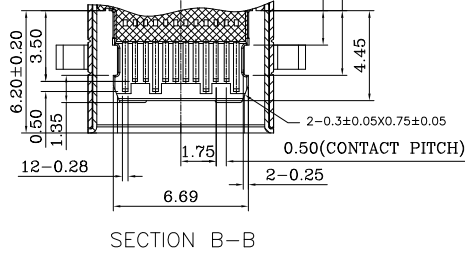
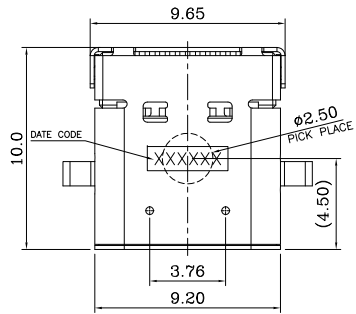


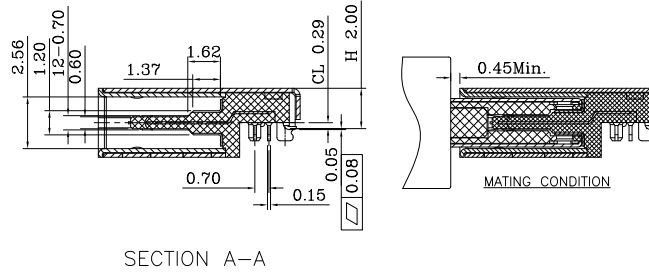
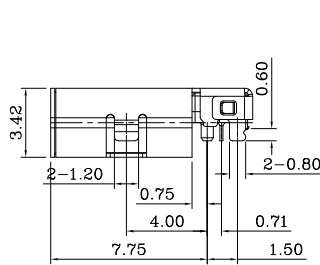
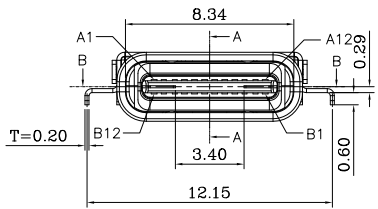
GP Component

REV.	ECN NO.	LOCATIONS	DESCRIPTION	DATE	DESIGN
A0			Initial	2015/03/26	Phebe Su
A1			Change	2017/08/02	Summer Wang



NOTES:

- MATERIAL: SEE "TABLE 1"
- FINISH: SEE "TABLE 1"
- MECHANICAL:
MATING FORCE: 5~20 N.
UNMATED FORCE: 6~20N AFTER TEST
DURABILITY: 10,000 CYCLES;
- ELECTRICAL:
CURRENT: 5A FOR COLLECTIVELY POWER SUPPLY
1.25A FOR VCONN PIN
0.25A FOR OTHER SIGNAL PIN.
WITHSTANDING VOLTAGE: 100V AC R.M.S.
CONTACT RESISTANCE: 40mΩ MAX.
INSULATION RESISTANCE: 100MΩ MIN.
- ENVIRONMENTAL
TEMPERATURE RANGE -40°C ~ +85°C



MATRIX PART NO:

MUSB12-01-103

MATRIX USB ——— Pin Number ——— Series number ———
Plating
01:Gold Flash
15:15u"
30:30u"

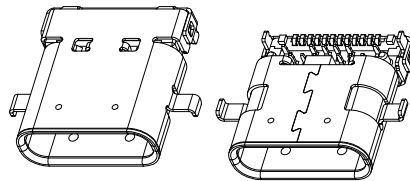
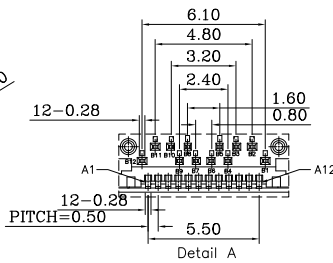
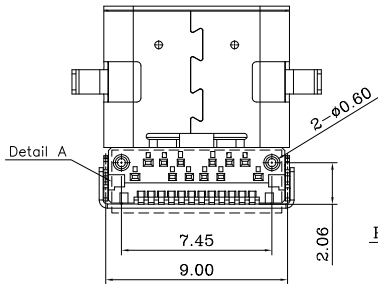


TABLE 1:

LTR	PART NAME	QTY	MATERIAL	REMARK
6	MID PLATE	1	STAINLESS STEEL t=0.10	N/A
5	COVER SHELL-B	1	STAINLESS STEEL t=0.10	Ni PLATED
4	COVER SHELL-A	1	COPPER ALLOY t=0.20	Ni PLATED
3	SHELL	1	STAINLESS STEEL t=0.20	Ni PLATED
2	CONTACT	1SET	COPPER ALLOY t=0.15	Ni All Area, Sn On Solder Tail, Gold Flash On Contact Area.
1	INSULATOR	1	HIGH TEMP.THERMOPLASTIC	UL94V-0 BLACK

Pin	Signal Name	Mating Sequence	Pin	Signal Name	Mating Sequence
A1	GND	First	B12	GND	First
A2	SSTXp1	Second	B11	SSRXp1	Second
A3	SSTXn1	Second	B10	SSRXn1	Second
A4	Vas	First	B9	Vas	First
A5	CC1	Second	B8	SBU2	Second
A6	Dp1	Second	B7	Dn2	Second
A7	Dn1	Second	B6	Dp2	Second
A8	SBU1	Second	B5	CC2	Second
A9	Vas	First	B4	Vas	First
A10	SSRXn2	Second	B3	SSTXn2	Second
A11	SSRXp2	Second	B2	SSTXp2	Second
A12	GND	First	B1	GND	First
SHELL	GND		SHELL	GND	



Matrix Electronics Co.,Ltd

TOLERANCE: X.X ±0.30 X.XX ±0.25 X.XXX ±0.20 ANGLE: ±3°	DESIGN BY :	DATE :	PART NAME: USB 3.1 Gen 2 Type C Female R/A, Offset type, CL 0.29
	Summer Wang	2017/08/02	
APPROVED BY1: Richard Hsieh	CHECKED BY:	DATE :	PART NO. MUSB12-01-103
	Vicky Hsieh	2017/08/02	
APPROVED BY2: Richard Hsieh	DATE :	MOLD NO. NA	
	2017/08/02		
UNIT: mm [inch] SCALE:1:1 SIZE:A4	DATE :	DRAW NO.	
	2017/08/02	SHEET NO. 1 OF 1	