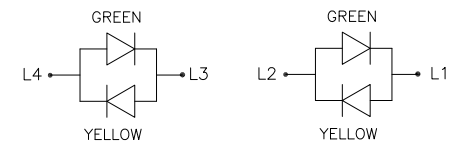
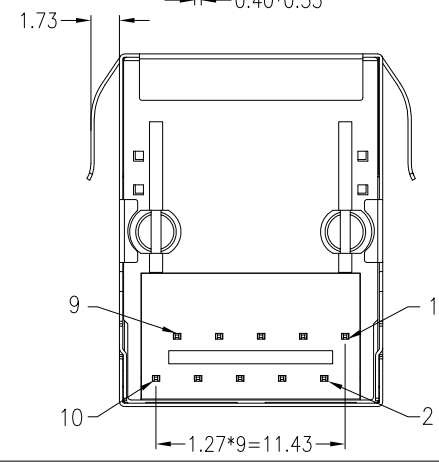
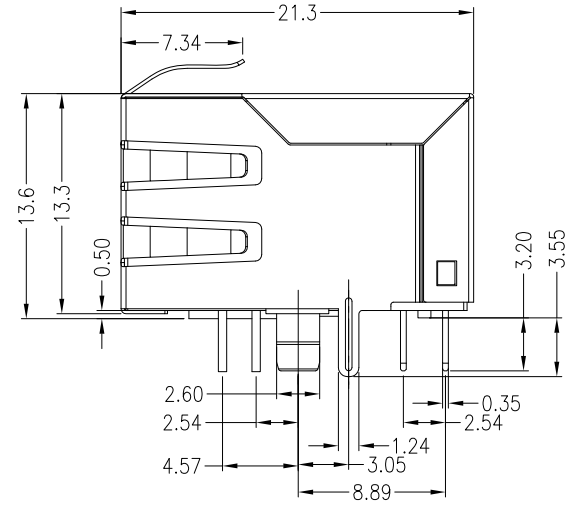
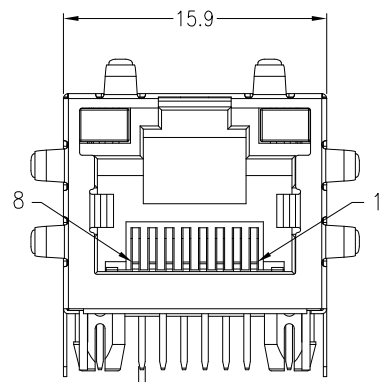
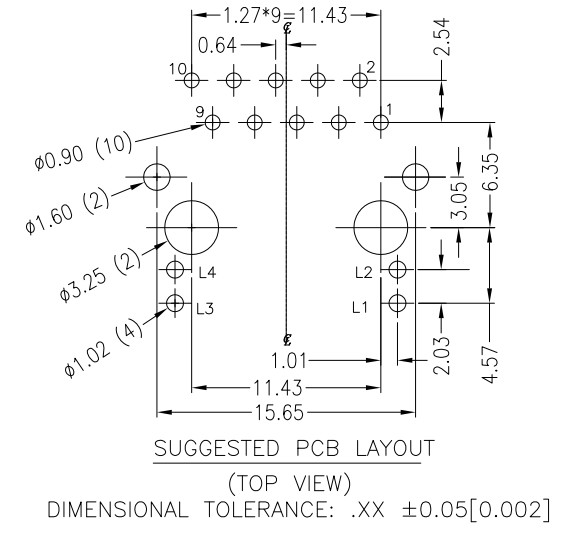
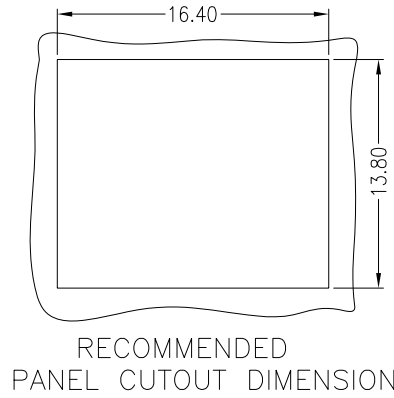
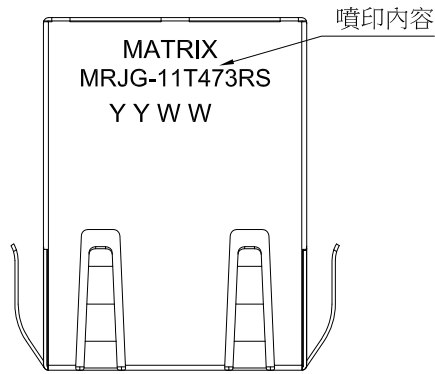


# GP Component

REV.	ECN NO.	LOCATIONS	DESCRIPTION	DATE	DESIGN
AO			Initial	2016/04/14	Phebe Su

## 1. MECHANICAL DIMENSIONS :



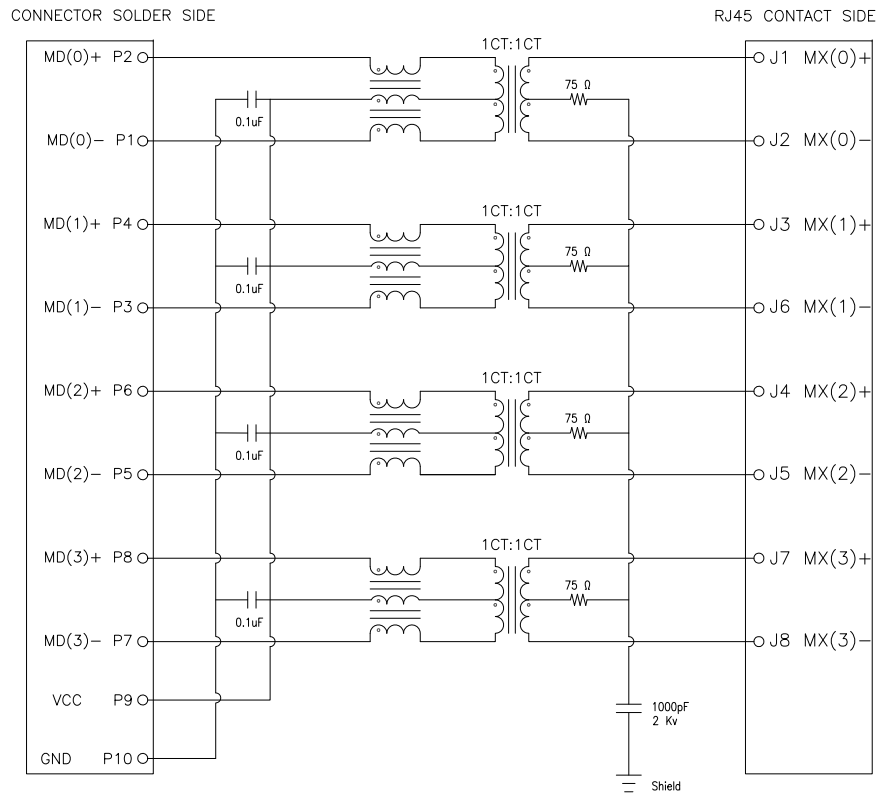
- NOTES:
- MATERIALS:  
HOUSING: PBT UL94V-0 BLACK  
CONTACTS: T=0.35 PHOSPHOR BORNZE, 50u" NICKEL MIN UNDERPLATE ON ALL AREA, 100u" TIN ON TERMINATION END, GOLD 6u" ON CONTACT AREA.  
SHIELD: BRASS C2680-H T=0.20mm±0.01 FOGGED (50% SHINE SOLVENT) NICKEL 30~50u" PLATING.
  - JACK CAVITY CONFORMS TO FCC RULES AND REGULATIONS PART 68, SUBPART F

NO	VARIETY	QTY	METERIAL	REMARK
			Matrix Electronics Co.,Ltd	
<b>TOLERANCE:</b> X:X ±0.38 X:XX ±0.25 X:XXX ±0.13 ANGLE: ±3°		<b>DESIGN BY :</b> Phebe Su	<b>DATE :</b> 2016/04/14	<b>PART NAME:</b> RJ45 CONNECTORS, W/LED, HOLE 100/1000MBPS, FILTER
		<b>CHECKED BY:</b> Vicky Hsieh	<b>DATE :</b> 2016/04/14	<b>PART NO.</b> MRJG-11T473RS
		<b>APPROVED BY1:</b> Richard Hsieh	<b>DATE :</b> 2016/04/14	<b>MOLD NO.</b> NA
		<b>APPROVED BY2:</b> Richard Hsieh	<b>DATE :</b> 2016/04/14	<b>DRAW NO.</b> SHEET NO. 1 OF 3
<b>UNIT:</b> mm [inch] <b>SCALE:</b> 1:1 <b>SIZE:</b> A4				

# GP Component

REV.	ECN NO.	LOCATIONS	DESCRIPTION	DATE	DESIGN
AO			Initial	2016/04/14	Phebe Su

## 2. SCHEMATIC :



MATRIX PART NO:

M R J G - 11 T 473 R S

Matrix-RJ45

F : 10/100  
G : 10/100/1000  
N : Pure Connector

RS: ROHS  
HF: Halogen Free



Series Number

S: SMD  
T: THT

11:1X1 ; 21:2X1  
12:1X2 ; 22:2X2  
14:1X4 ; 24:2X4  
16:1X6 ; 26:2X6  
18:1X8 ; 28:2X8  
1U:RJ+USB

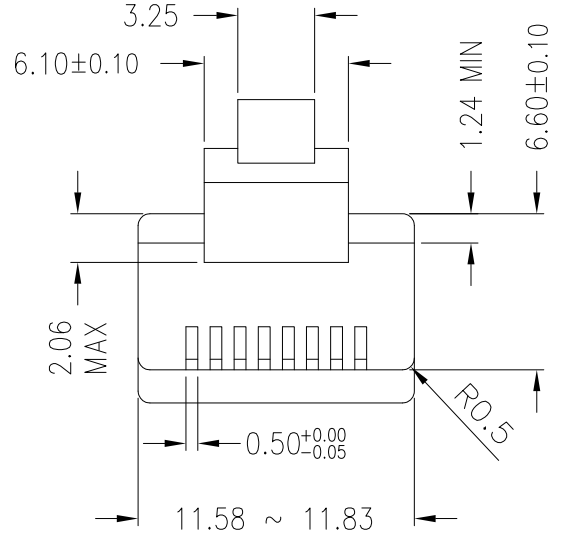
## 3. ELECTRICAL CHARACTERISTICS(25±5°C) :

- TR:(100KHz,0.1V); 100%  
PINS:(P2,P1):(J1,J2)=1:1±3%;(P4,P3):(J3,J6)=1:1±3%  
PINS:(P6,P5):(J4,J5)=1:1±3%;(P8,P7):(J7,J8)=1:1±3%
- LX:(100KHz,100mV,8mA, DC Bias) 100%  
PINS:(P2,P1),(P4,P3),(P6,P5),(P8,P7)=350uH MINIMUM
- DCR: 100%  
PINS:(J1,J2),(J3,J6),(J4,J5),(J7,J8)=1.2 OHM MAXIMUM
- HIPOT: 100%  
PINS(P2,P1)TO(J1,J2),(P4,P3)TO(J3,J6)=1500VAC FOR 60 SECONDS  
PINS(P6,P5)TO(J4,J5),(P8,P7)TO(J7,J8)=1500VAC FOR 60 SECONDS
- INSERTION LOSS:  
-1.0dB MAXIMUM AT 1MHz TO 100MHz;
- RETURN LOSS:  
-20dB MINIMUM AT 1MHz TO 30MHz;  
-15dB MINIMUM AT 30MHz TO 60MHz  
-10dB MINIMUM AT 60MHz TO 80MHz
- CROSS TALK:  
-30dB MINIMUM AT 1MHz TO 100MHz
- COMMON TO COMMON MODE REJECTION:  
-30dB MINIMUM AT 1MHz TO 100MHz

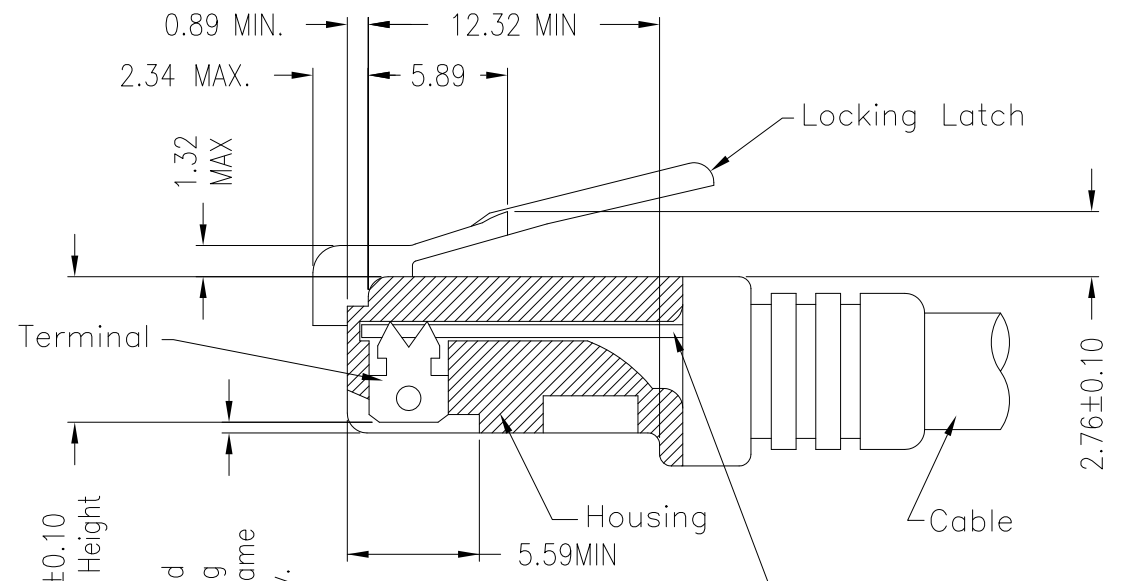
NO	VARIETY	QTY	MATERIAL	REMARK
 <b>Matrix Electronics Co.,Ltd</b>				
<b>TOLERANCE:</b> X.X ±0.38 X.XX ±0.25 X.XXX ±0.13 ANGLE: ±3°		<b>DESIGN BY :</b> Phebe Su	<b>DATE :</b> 2016/04/14	<b>PART NAME:</b> RJ45,CONNECTORS,W/LED, HOLE 100/1000MBPS,FILTER
 <b>UNIT: mm [inch]</b>		<b>CHECKED BY:</b> Vicky Hsieh	<b>DATE :</b> 2016/04/14	<b>PART NO.</b> MRJG-11T473RS
<b>SCALE:1:1 SIZE:A4</b>		<b>APPROVED BY1:</b> Richard Hsieh	<b>DATE :</b> 2016/04/14	<b>MOLD NO.</b> NA
		<b>APPROVED BY2:</b> Richard Hsieh	<b>DATE :</b> 2016/04/14	<b>DRAW NO.</b> <b>SHEET NO.</b> 2 OF 3

# GP Component

REV.	ECN NO.	LOCATIONS	DESCRIPTION	DATE	DESIGN
A0			Initial	2016/04/14	Phebe Su



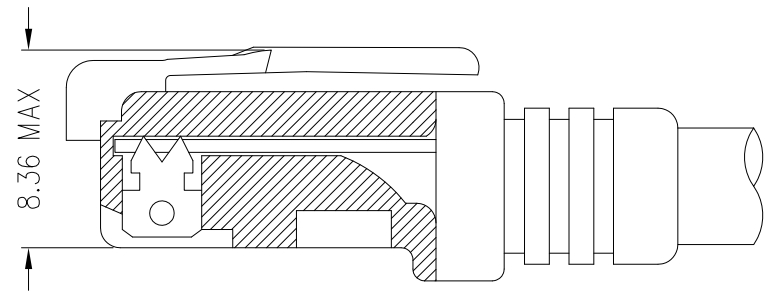
- \* There must be no damage to housing or locking latch. There must be no nicks or cuts in cable.
- \* Durability : 750 cycles generally




All contacts recessed below top of housing and must be at the same height approximately.

FOLLOW SPECIFICATION : FCC, PART 68, SUBPART F FIGURE 68.500 (C)(2)(i) AND IEC 603-7 FIGURE 23 & 24

## STANDARD MODULAR PLUG ASSEMBLY



FOLLOW SPECIFICATION : FCC, PART 68, SUBPART F FIGURE 68.500 (C)(2)(ii)

NO	VARIETY	QTY	MATERIAL	REMARK
 <b>Matrix Electronics Co.,Ltd</b>				
<b>TOLERANCE:</b> X:X ±0.38 X:XX ±0.25 X:XXX ±0.13 ANGLE: ±3°		<b>DESIGN BY :</b> Phebe Su	<b>DATE :</b> 2016/04/14	<b>PART NAME:</b> RJ45 CONNECTORS, W/LED, HOLE 100/1000MBPS, FILTER
		<b>CHECKED BY:</b> Vicky Hsieh	<b>DATE :</b> 2016/04/14	<b>PART NO.</b> MRJG-11T473RS
		<b>APPROVED BY1:</b> Richard Hsieh	<b>DATE :</b> 2016/04/14	<b>MOLD NO.</b> NA
		<b>APPROVED BY2:</b> Richard Hsieh	<b>DATE :</b> 2016/04/14	<b>DRAW NO.</b> <b>SHEET NO.</b> 3 OF 3
<b>UNIT:</b> mm [inch]				
<b>SCALE:</b> 1:1 <b>SIZE:</b> A4				