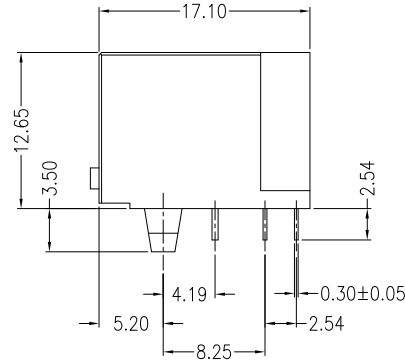
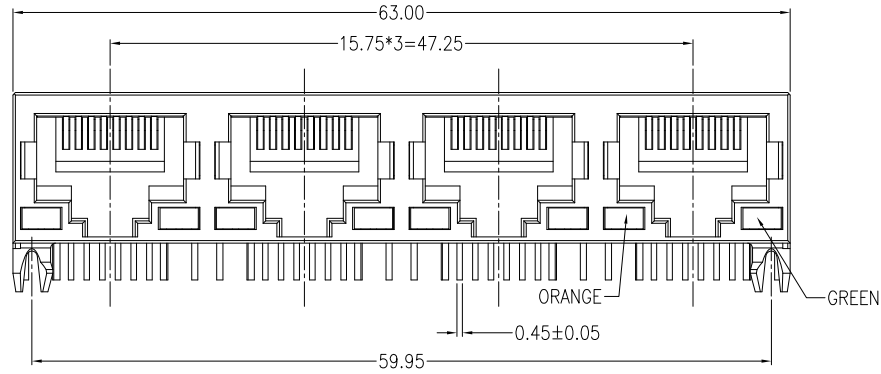


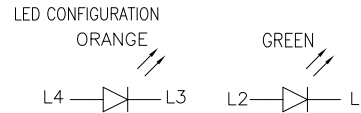
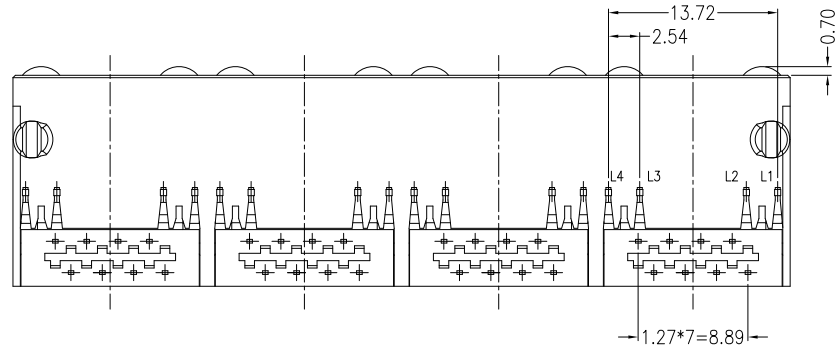
GP Component

REV.	ECN NO.	LOCATIONS	DESCRIPTION	DATE	DESIGN
AO			Initial	2018/07/15	Phebe Su



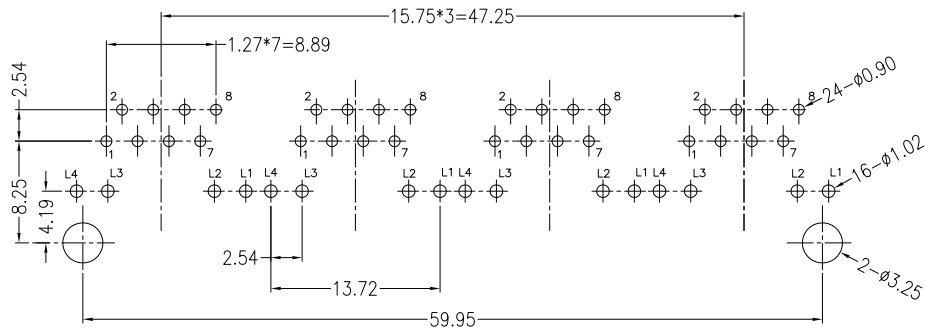
NOTES:

- MATERIALS:**
HOUSING: PBT, UL 94V-0, BLACK.
CONTACTS: T=0.30 mm PHOSPHOR BRONZE, 50u" NICKEL UNDERPLATE 100u" TIN ON SOLDER TAIL, GOLD FLASH ON CONTACT AREA.
- OPERATING TEMPERATURE:** -40°C ~ +85°C
- JACK CAVITY CONFORMS TO FCC RULES AND REGULATIONS PART 68, SUBPART F**



MATRIX PART NO :

M R J N - 1 4 T 1046 R S
 Matrix-RJ45
 F : 10/100
 G : 10/100/1000
 N : Pure Connector
 11:1X1 ; 21:2X1
 12:1X2 ; 22:2X2
 14:1X4 ; 24:2X4
 16:1X6 ; 26:2X6
 18:1X8 ; 28:2X8
 1U:RJ+USB
 RS : ROHS
 HF : Halogen Free
 Series Number
 S : SMD
 T : THT



RECOMMENDED PCB LAYOUT
COMPONENT SIDE
TOLERANCE ±0.05



Matrix Electronics Co.,Ltd

TOLERANCE: X.X ±0.38 X.XX ±0.25 X.XXX ±0.13 ANGLE: ±3°	DESIGN BY : Phebe Su	DATE : 2018/07/15	PART NAME: RJ45 CONNECTOR 1X4 PORT W/LED	
	CHECKED BY: Vicky Hsieh	DATE : 2018/07/15	PART NO.	MRJN-14T1046RS
UNIT: mm [inch]	APPROVED BY1: Richard Hsieh	DATE : 2018/07/15	MOLD NO.	NA
SCALE:1:1 SIZE:A4	APPROVED BY2: Richard Hsieh	DATE : 2018/07/15	DRAW NO.	
			SHEET NO.	1 OF 1